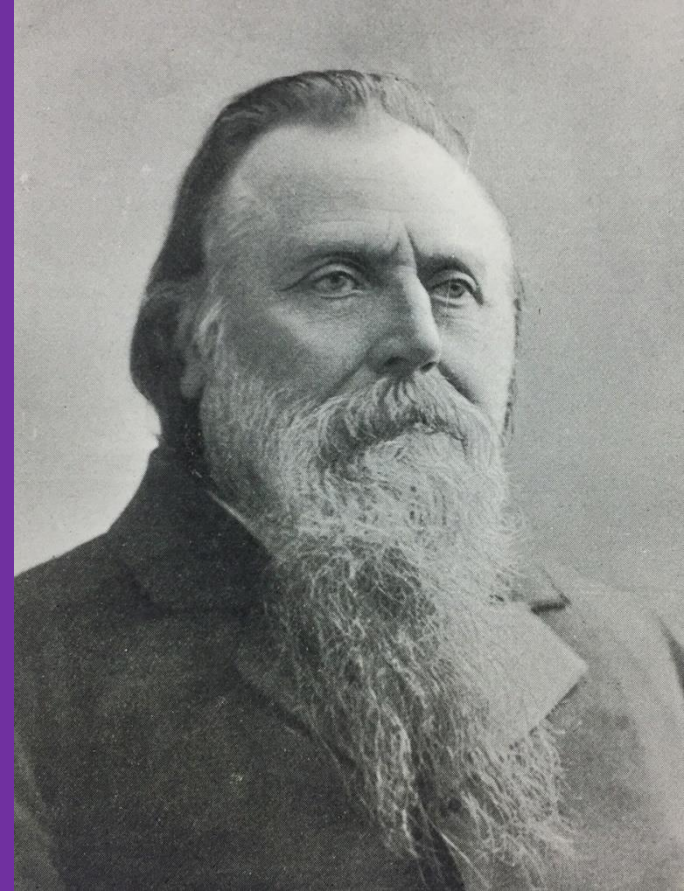


# 1<sup>st</sup> Lt. Jeremiah

## Leeds:

Capt. Payne's Company in Col.  
Somers' Regiment (a.k.a. Somers'  
3<sup>rd</sup> Battalion, Eastern Battalion),  
in the Gloucester County NJ  
Militia



Robert Barclay Leeds

# “The Quintessential Yeoman Piney”

2 Mar 1754 – 10 Oct 1838

# First, Let's Get Our 1600-1800 Bearings



Note: LEH Inlet (Old Inlet) is 5 mi. N of the present LEH inlet (New Inlet)

Atlantic City Inlet and Atlantic City, aka Leeds Beach, Absecon Beach

Great Egg Harbor

1777 William Faden hand-drawn map made from the 1760 edition

# Eastern Gloucester County's 1775

## “Piney” Population Was Not Monolithic

- “Many straggling, impertinent, vociferous swamp men were along this morning; they used me with great civility. At twelve we began the service; there were about forty and fifty present.” Sunday, Feb. 5, 1775 – Diary of The Rev. Philip Vickers Fithian, pp. 268-76.



- “I rode to the Forks at Little Egg Harbor and put up...at Elijah Clark’s...Mr. Clark is a man of fortune, economy and taste....From the Forks I rode to the sea shore to Mr. Price’s (Chestnut Neck), an English young gentleman of fortune and breeding.” Fithian - Feb. 6 and Feb. 25, respectively.

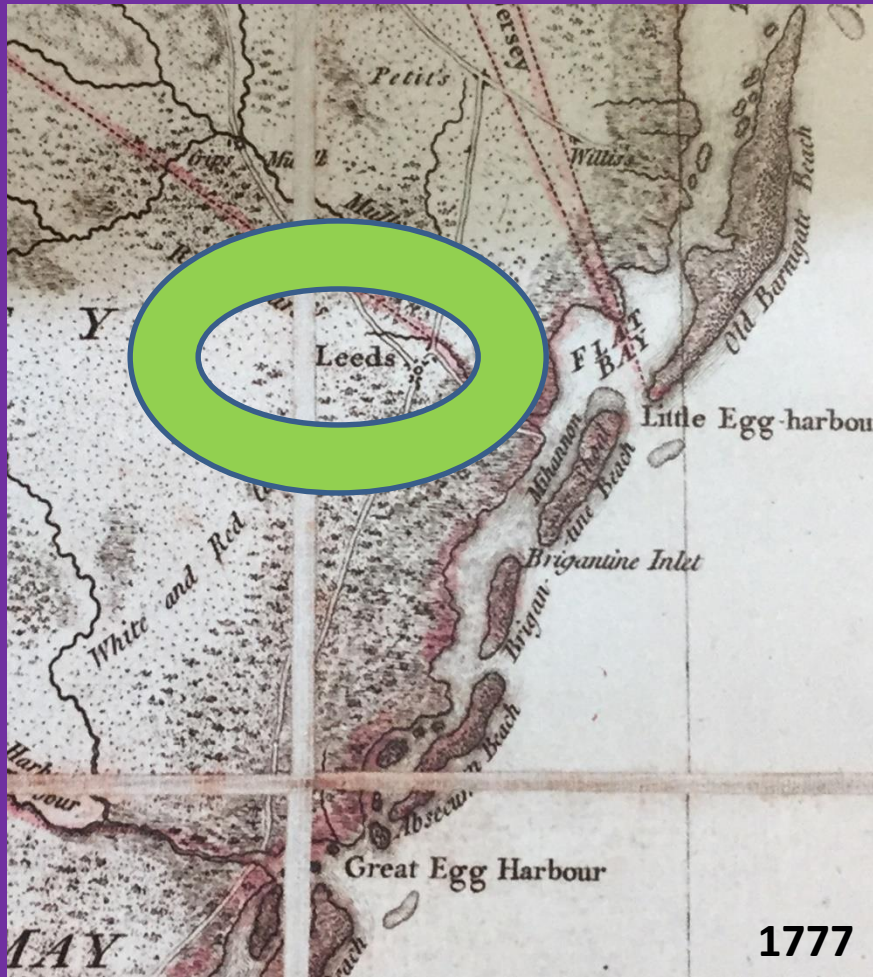
**Fithian also visited and complimented the “civilized” residents at the Beach (AC Inlet), Absecum, Bargaintown, Batsto Furnace, Mays Landing, Leeds and Port Republic (then Wrangleboro).**

# The 1773 Land Tax Records Show at least 300 landowners/yeomen, maybe more, in Great Egg Harbor

- The NJ Revolutionary War payrolls show about 400 men between 18 and 50 years old in the 3<sup>rd</sup> Battalion (State Archives payrolls + Stryker).
- The county today is about 30 by 20 miles; so one could get across the county by foot in a day or less or by horse in a few hours maximum.
- Also, an 4 lb. cannon signal blast aimed north from Somers Point toward Leeds could be heard in Absecon and maybe Leeds. (They used sequential cannon signals to call troops per James Leeds).



# Now, Let's Talk About Jeremiah Leeds



Farmer/Preacher John Leeds and his wife Sarah Mathis produced Jeremiah on 4 Mar 1754 at Leeds in Eastern Gloucester County. As a man he stood 6'2" weighing 250 lbs.

Thomas (1620-87) > Daniel (1651-1720) > Japeth (1683-1748) > John (1708-85) > Jeremiah (1754-1838)

# Japeth Leeds House, Leeds Point, NJ

- Rye, corn & other family food needs.
- Fishing & shellfish for family needs.
- Timber for family needs & export.
- Raising cattle for export market.
- Farming salt hay for farm & market.

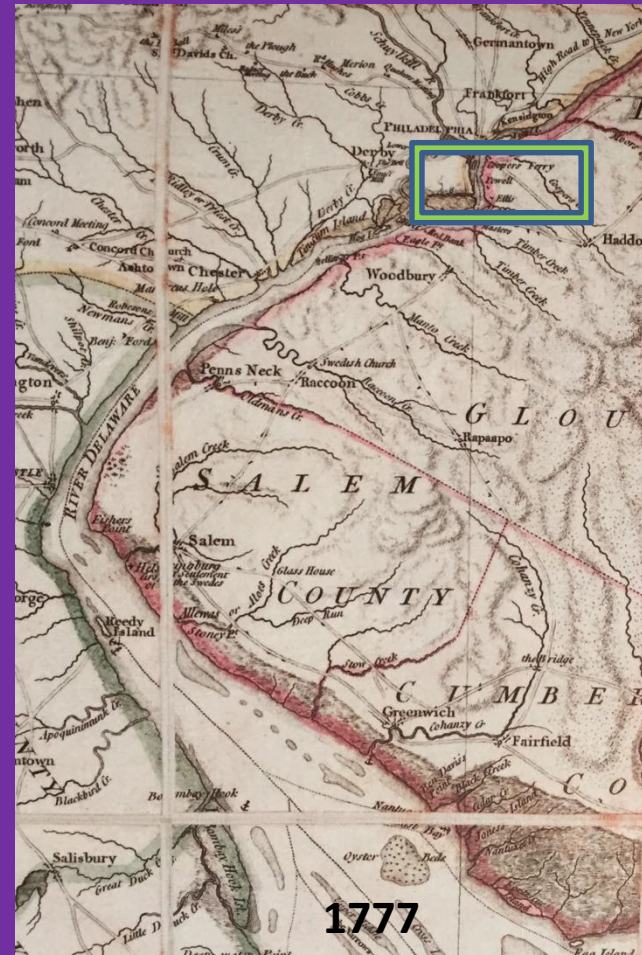


Jeremiah & brother Vincent were partners by age 20, running the family business

# Jeremiah in the American Revolution

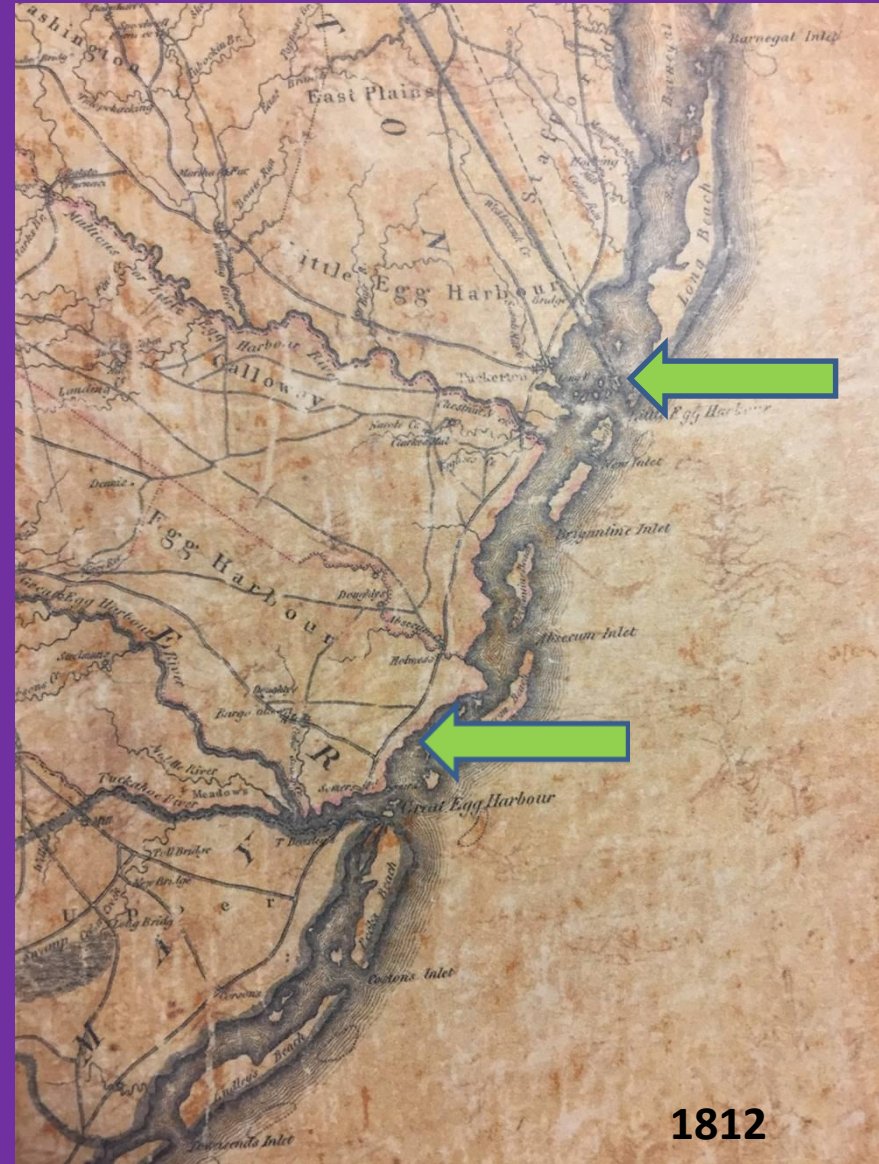


- A Quaker pacifist.
- Two \$8 steers (\$3,500 in today's dollars) led to him becoming a militiaman.
- He enlisted Sept, 1776 in Capt. N. Morse's Company and served a month at Cooper's Ferry.



# Fort Building Commenced Early

- The British combed the barrier and bay islands to commandeer cattle, feed for animals and fire wood. “Legal thievery.”
- The Loyalists were doing the same. Illegal thievery.
- So inlet “watch-forts” were constructed (8/75 per Wm. Jeffries at FB - 4/76 at SP per Isaac Hickman) and barrier island patrols were organized (8/75 per Al. Albertson).
- British ships destroyed Fox Burrows in Aug, 1776 per Pvt. Zadok Bowen but it was rebuilt.





# Jeremiah in the American Revolution



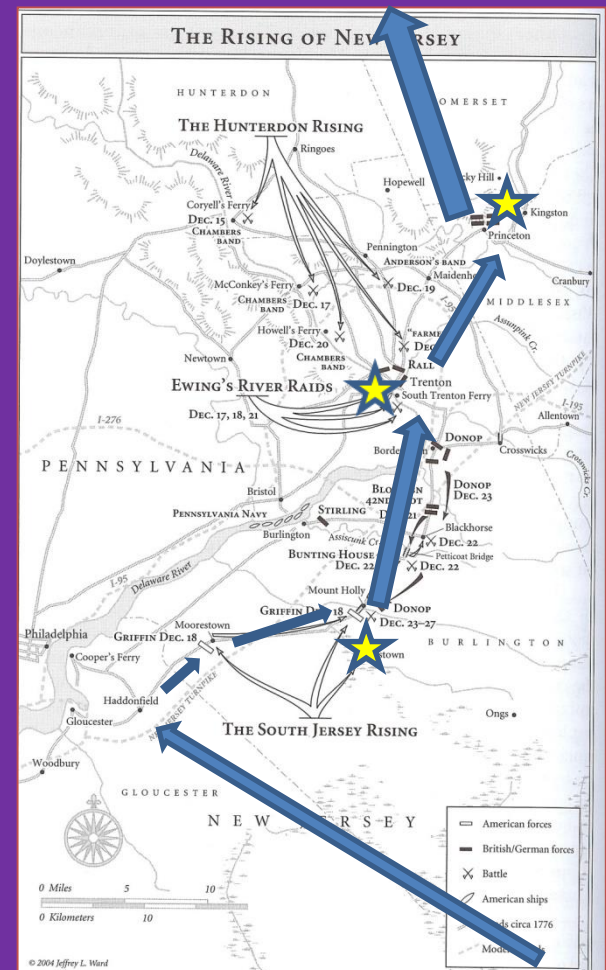
- 1st duty Sept, 1776 building the Fox Burrow “fort” at Old Inlet (Holgate). This small fort was used to watch over ships coming in the inlet, anchor prizes and house pilots. As far as can be known, the fort was armed only in 1776-77. Aka Ft Tucker.



# Jeremiah in the American Revolution



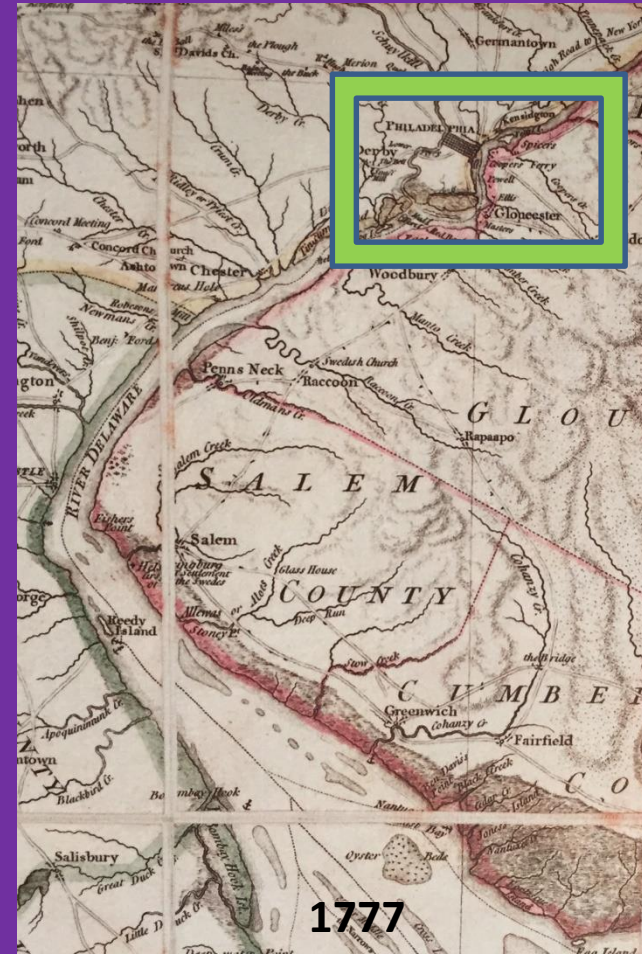
- Battle at Petticoat Bridge in Dec, 1776
- 2nd duty continued at Trenton #2 and Princeton in Jan, 1777
- Wintered at Millstone, probably with Maxwell's Brigade under Gen. Washington through Feb, 1777



# Jeremiah in the American Revolution



- Mar, May and July of 1777 served guard duty at Cooper's Ferry. Congress was in Philadelphia and these guards were a barrier to possible raids from North Jersey by the British and Hessians.
- Sep, 1777 – British took Philadelphia



# 1776 and 1777 Naval Attacks on Fox-barrows at Old Inlet

A Memorial from Elijah Clark, Richard Wescott, & John Cox was read, Setting forth that the Enemy's ships of War entered little Egg harbor, Inlet, and seized two brigs lying at the Fox-barrows, just within the Inlet, & carried them off, with a considerable quantity of Stock &c, and praying that little Egg-harbour may be fortified &c, and that this Board would issue the necessary orders for that purpose.

Agreed unanimously, That this Board is not competent to decide upon the subject-matter of the said Memorial ; and therefore that it be referred to the Legislature.

Adj<sup>d</sup> to 9 O'clock Monday Morning.

Monday, July 7<sup>th</sup> 1.777

Met pursuant to adj<sup>nt</sup>.

Present.

His Excellency the Governor

M<sup>r</sup> Scudder

M<sup>r</sup> Paterson

M<sup>r</sup> Elmer

M<sup>r</sup> Camp

M<sup>r</sup> Condict

M<sup>r</sup> Symmes

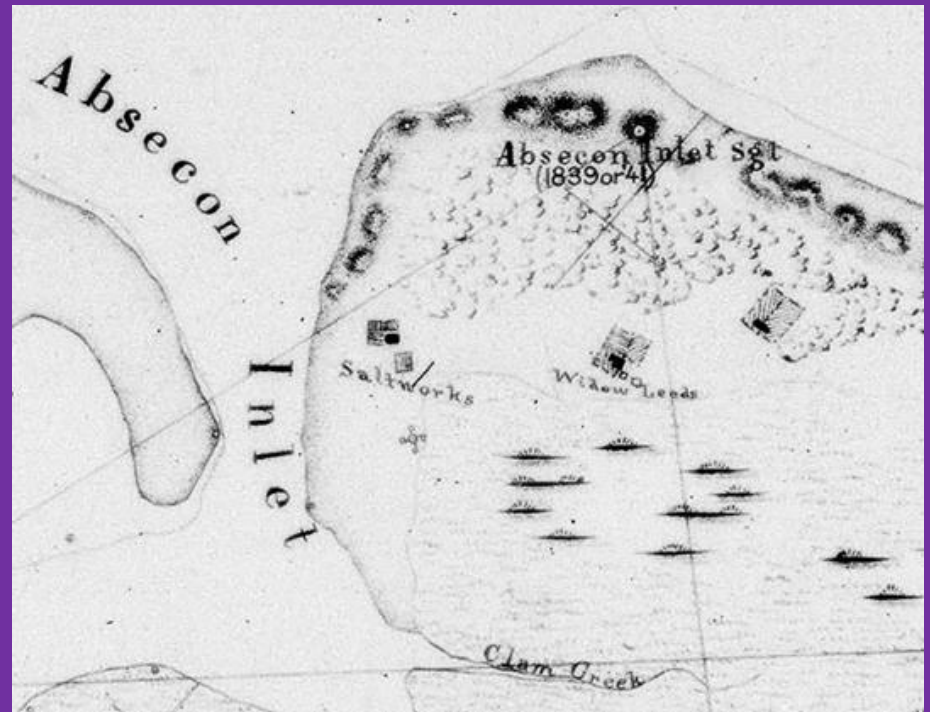
# Jeremiah in the American Revolution



- Nov, 1777 at the Battle of Red Bank on the Delaware – promoted to 1st Lt. under Capt. Covenover (Conover).
- Dec, 1777 plus Jan, 1778 served guard duty at Cooper's Ferry. No specifics of other service until the Fall of 1778.
- Quaker anti-military excommunication.
- Mid-Sep through Oct of 1778 at Chestnut Neck attack and what followed.
- No specifics until 1780 when he was called up but was out-of-town. No specifics thereafter. At least 1 other service.
- Final payroll alludes to month on, month off throughout rest of the war to protect from many attacks on local patriots.

# Wintering at Leeds Point; Summering at Leeds Beach

- Son Chalkley says his father started buying Absecon Beach land by 1785 for grazing cattle.
- Hall says Jeremiah first built a log cabin in 1793 on the island and then a larger house in about 1815.



1841 US Govt. shoreline map

# Jeremiah's 1250 Acre Absecon Beach



Chelsea Ave. area in the 1860's



Woodlands with medium dunes



AC 50' sand dunes in the 1860's

# Jeremiah's Expressway: Shore Road in 1828



Strickland house, Old New York Road

Oldest house in Galloway – typical of the era for a family of means. The map is the 1828 Gordon Map. No bridges over GEH, Nacote or Mullica until about 1900.

- Johnsontown
- Higbeeville
- Smithville/Leeds/Leeds Point
- Centerville
- Oceanville
- Conoverville
- Absecon
- Mt. Pleasant
- Smith's Landing
- Bakersville
- Leedsville
- Somers Point





# 1838 Estate Accumulation

- 1250 acres owned in present Atlantic City – he owned all of AC except 131 acres.
- 66 acres owned in Leeds Point.
- 185 acres owned in Leedsville.
- Jeremiah paid an average of 40¢ per acre, and his children sold it to early Atlantic City investors for \$5 to \$17 per acre.

(Source: NJ Orphan's Court verbatim – NJ Archives with a copy at ACHS) **Estate value: \$650,000 for land plus herds & moveable assets**

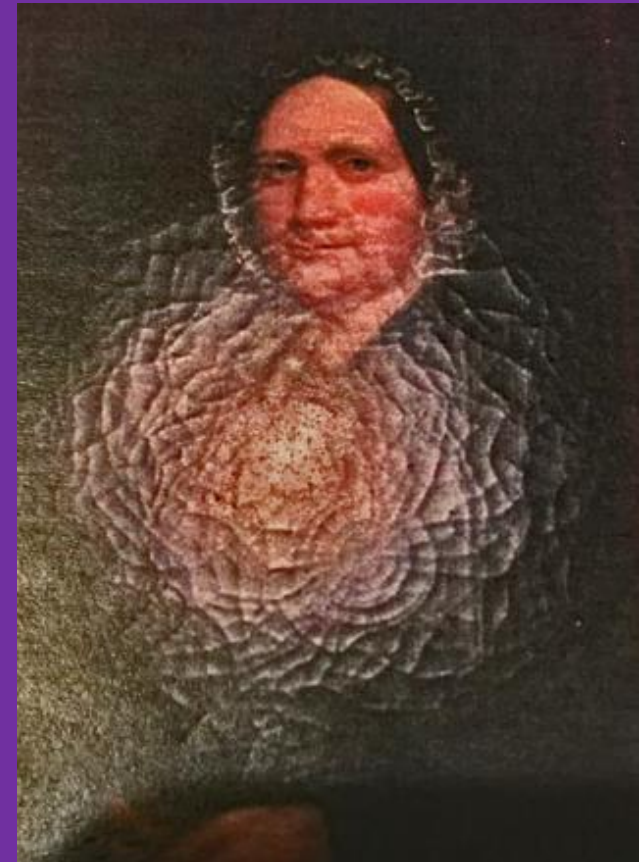


# Millicent Steelman Leeds (1792-1873)

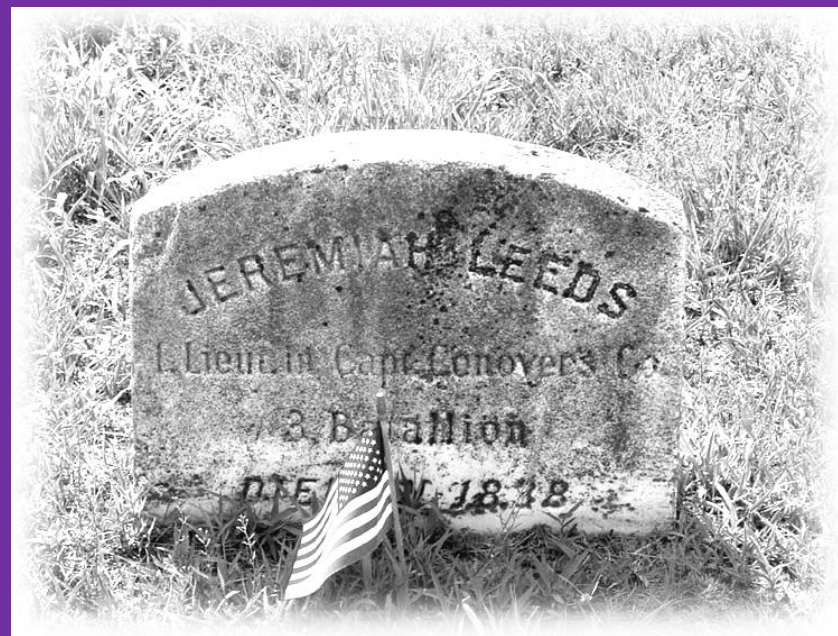


**Ask me about  
this photo!**

**The best synthesis of some vague family information leads to the idea that this Absecon Island House was built before 1838 by Jeremiah & Millicent and later used by oldest son Andrew and his family. The other alternative is that it was built by and lived in only by Andrew and his family.**



# Died of lip cancer 10 Oct 1838 at 185 acre Leeds Plantation in Leeds Point



Buried in Leedsville (present Northfield) on the Leeds/Steelman Plantation (farm). His “remains” and headstone were moved in the 1950’s to Oxford Circle in Northfield to make room for a housing development.

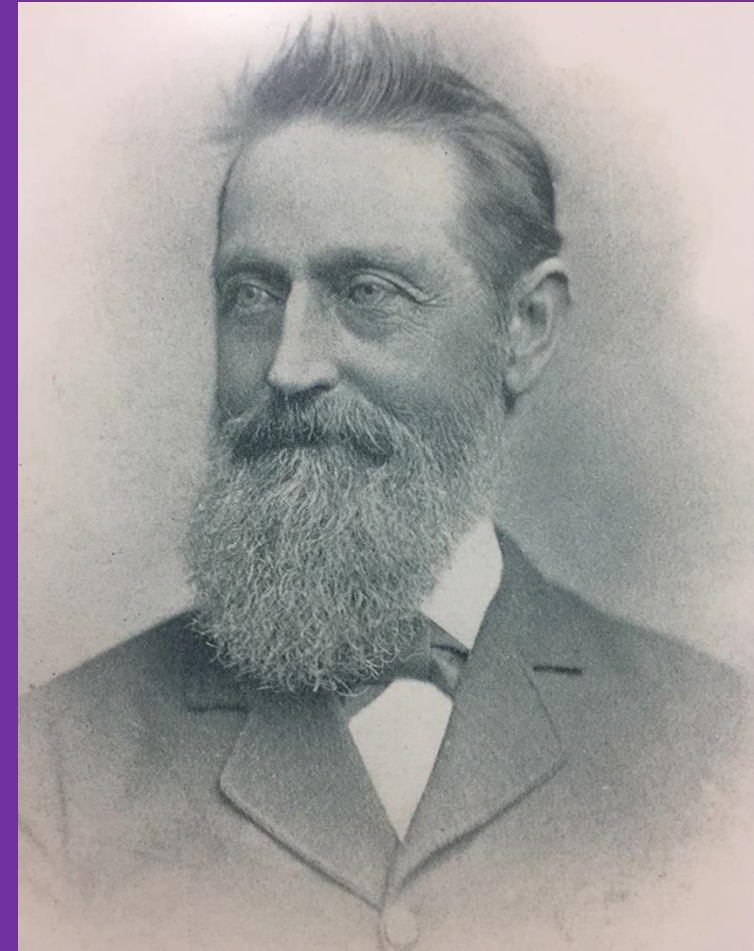
# Jeremiah Leeds: the Quintessential Piney

- A typical 5<sup>th</sup> generation Egg Harbor “yeoman-piney,” a farmer, bay-man and land speculator.
- A typical 3<sup>rd</sup> Battalion “fightin’ Quaker” from start to finish during the War for Independence.
- A typical “prolific” family man of the era: 2 wives birthing 9 children of which 6 reached adulthood, producing a whole “herd” of grandchildren, etc.
- A typical “son of the Puritan era” in providing for all his children’s futures in saleable farm land.

# 1<sup>st</sup> Lt. Jeremiah

## Leeds:

Capt. Payne's Company in Col.  
Somers' 3<sup>rd</sup> Regiment (a.k.a.  
Somers' Battalion, Eastern  
Battalion),  
in the Gloucester County NJ  
Militia



Chalkley Leeds

“The Quintessential Yeoman Piney”

<http://nj.gov/pinelands/about/events/PSC/>

**If you need to reach me, please  
use the following contact info:**

**CELL: 609-513-1044**

**EMAIL: [normangoos@gmail.com](mailto:normangoos@gmail.com)**

**If you just like to argue about  
everything, please ignore this  
invitation 😊 !**